

Subject to prior Sale we offer ex Location Germany

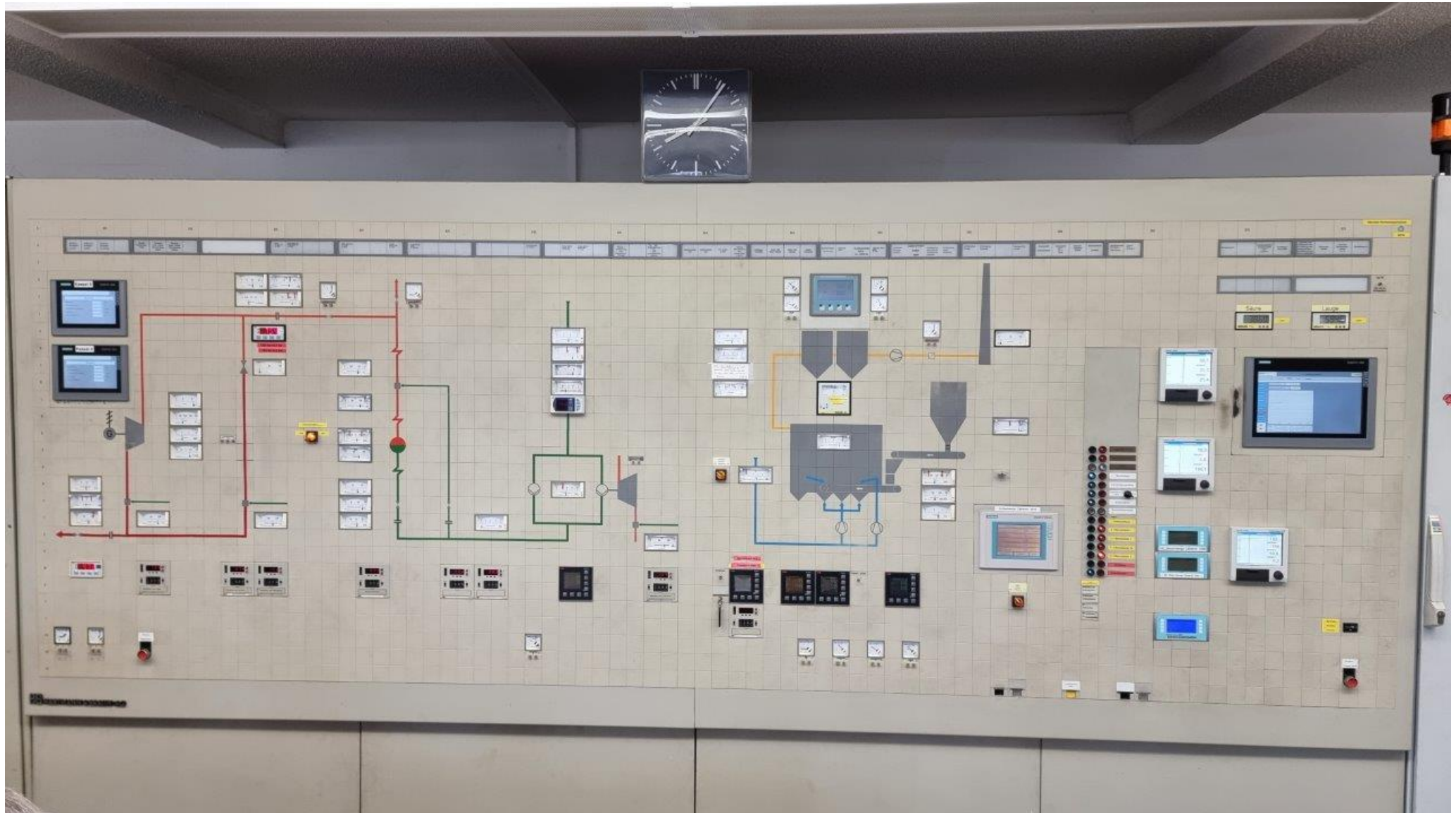
Complete Coal Power Station with 5 MW Steam-Turbine and Electric Power Generator



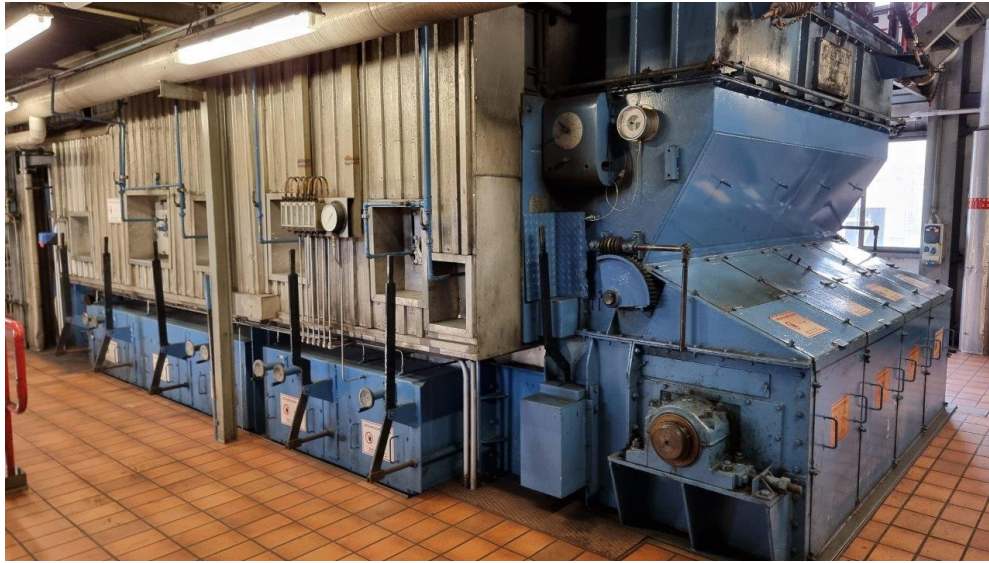
Data of Boiler:

Water-Pipe-Boiler	with natural circulation (thermosyphon effect)
Steam capacity	30 – 34 to / hour
Max. operation pressure	90 bar
Steam temperature	500 Deg C
Fuel	Coal
Max. Heat Capacity	27,6 MW
Water Temperature	130 Deg C
Year of Manufacture	1985 / frequently modernized and updated
Days of Operation per Year	300

Main Operation Board in Control Room:

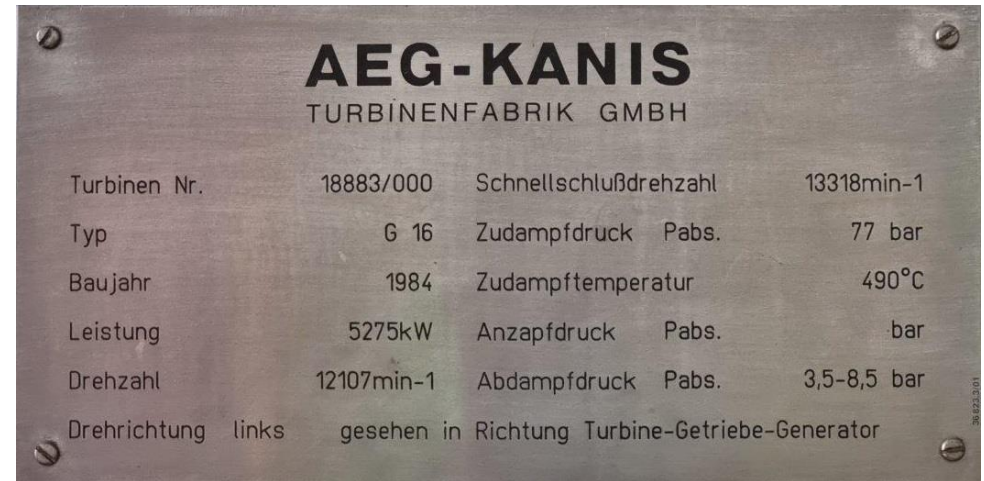


High-Pressure Boiler with continous creep-feed grate-conveyor Furnace:



Data of Steam Turbine:

Make	AEG KANIS (SIEMENS)
Construction	back pressure turbo set
Model	G 16
Year of Manufacture	1984 / frequently
modernized + updated	
Capacity	5.275 kW
Speed	12.107 rpm
Steam Pressure	78 bar
Steam Temperature	490 – 500 Deg C
Exhaust pressure	3,5 – 7,5 bar

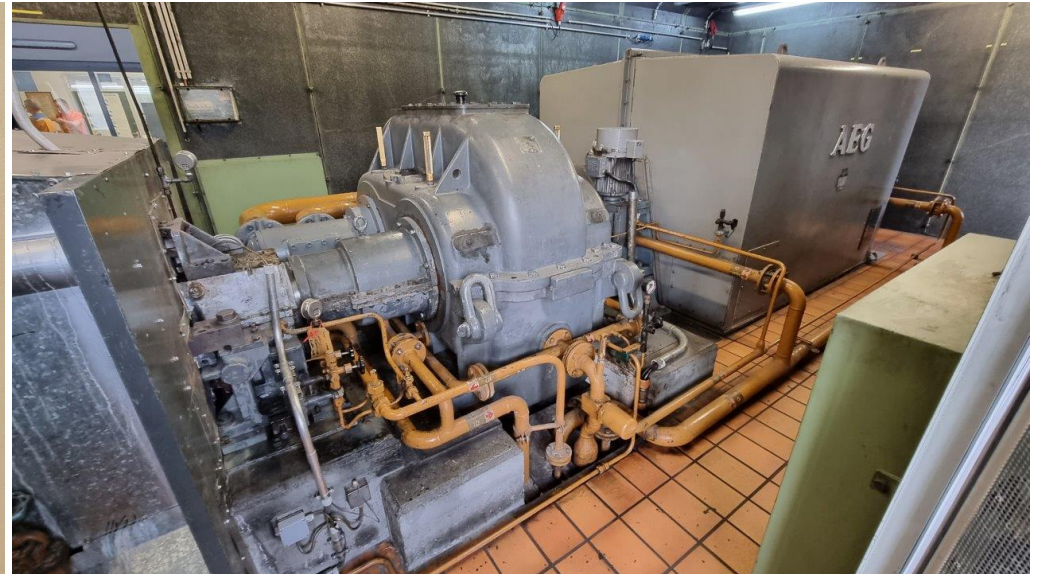
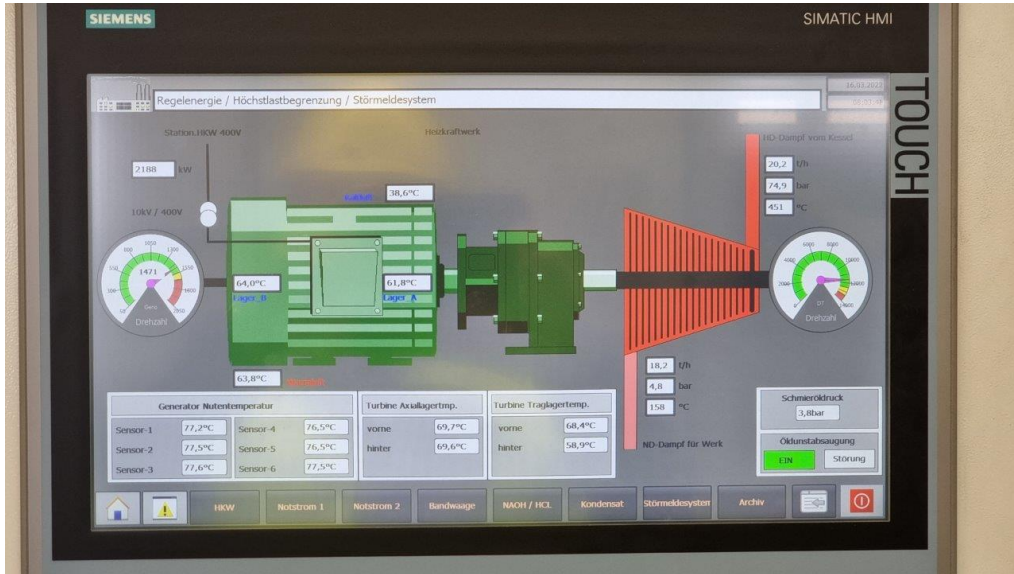


AEG-KANIS			
TURBINENFABRIK GMBH			
Turbinen Nr.	18883/000	Schnellschlußdrehzahl	13318min-1
Typ	G 16	Zudampfdruck Pabs.	77 bar
Baujahr	1984	Zudampfperatur	490°C
Leistung	5275kW	Anzapfdruck Pabs.	bar
Drehzahl	12107min-1	Abdampfdruck Pabs.	3,5-8,5 bar
Drehrichtung	links	gesehen in Richtung Turbine-Getriebe-Generator	

Data of Generator:

Make	AEG LDW (SIEMENS)
Construction	three-phase synchronous generator
Model	DKBL 805 / 4
Baujahr	1984 / frequently modernized and updated
Nominal Capacity	6,25 MVA
Active Power	5 MW
Nominal Voltage	10,5 kV
Nominal Amps	344 A
Nominal Frequency	50 Hz
Nominal Speed	1.500 rpm
Max. altitude above sea level	1.000 m

Fotos of Turbine and Generator



Coal / Fuel Data:

Storage Capacity	2.000 to
Daily Consumption	80 – 100 to
Through Chain Conveyor	40 – 80 to / hour



Flue Gas Cleaning Unit:

- 2 Zones Electric Separator
- Flue Gas Discharge via induced Draft Speed Controller
- frequently modernized and updated
- Chimney (height: 70,5 m)



Feed Water Supply:

Vollentsalzung

2 x 15 qbm / hour

Mischbett-Filter

2 x 30 qbm / hour

Condensate Cooling

by Air Preheating

Water Tank

30 qbm

Full load pump

1 x with E-Drive, speed controlled

1 x with Turbo-Drive, speed controlled with quick-start-device



Main Data in German:

HEIZKRAFTWERK

Hochdruck-Strahlungskessel

mit Wanderrostfeuerung

Dampfleistung max. dauernd	30 t/h
Dampfleistung vorübergehende Spitze	34 t/h
Zulässiger Betriebsüberdruck	90 bar
Heißdampf Temperatur	500 °C
Speisewassertemperatur	105-130 °C

Betriebsführung vollautomatisch über zentralen Leitstand

Brennstoff

Lagerkapazität	2000 t
Tagesverbrauch	80-100 t
Trogkettenförderer	40/80 t/h

Rauchgasreinigung

2 Zonen-Elektro-Abscheider	
Rauchgasabförderung über Saugzug drehzahl geregelt	
Kaminmündung	70,5 m

Schlüsselfertige Erstellung des Elektro-mechanischen Bereiches durch:

Speisewasserversorgung

Vollentsalzung	2x15 m ³ /h
Mischbettfilter	2x30 m ³ /h
Kondensatkühlung durch Luftvorwärmung	
Speisewasserbehälter Nutzinhalt	30 m ³
1 Vollastpumpe mit E-Antrieb drehzahl geregelt	
1 Vollastpumpe mit Turbo-Antrieb drehzahl geregelt, mit Schnellstarteinrichtung	

Turbo-Generator-Gruppe

Gegendruckgeregelt/Leistungsgeregelt

Schluckfähigkeit	34 t/h
Überdruck am Eintritt	76 bar
Überdruck am Austritt	2,5-7,5 bar
Drehzahl	12000/1500 min ⁻¹
Spannung	10,5 KV
Klemmenleistung max.	5200 KW

Power Station Outside Views:





The Power Station is still in use and can be inspected by appointment in the South of Germany. It will become available for dismantling in 2024.